

CARL® HD-430N Instruction Sheet

Thank you for purchasing CARL New Heavy Duty Punch. Please read the instructions carefully before use, use the device correctly, and keep the instruction sheet for further reference.

This is a power puncher equipped with a punching blade and a punching disk.

Punching blade Consumable tubular blade for punching paper.
Punching disk Consumable disk blade rest.

⚠ Important warning

Do not double-punch over the holes or punch half at the edge of paper.

Such improper use may block up the puncher and give an excessive load to the tubular blade, causing damage and failure.

⚠ Warning

Failure to observe the following may cause injury.

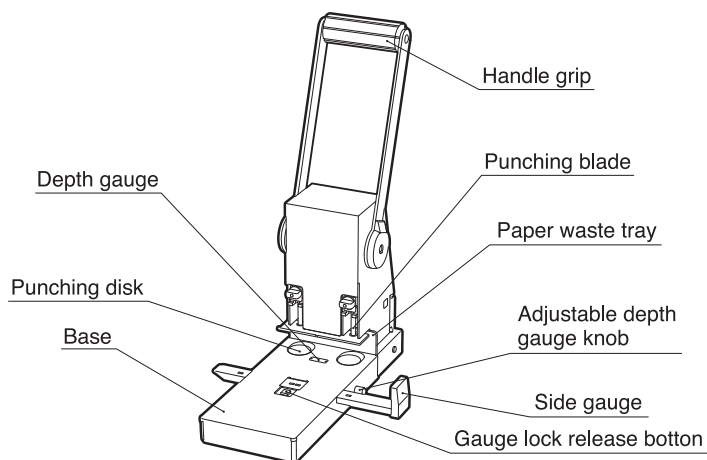
- ⊘ The punching surface is equipped with a blade. Do not touch the blade.
- ⊘ Never allow a child to use the puncher.
- ⊘ Do not place anything on the puncher or sit on it.
- ⊘ Do not use it on an unstable surface.
- ❗ Hold the puncher securely with both hands when carrying it.

⚠ Caution

Failure to observe the following may cause damage to the device.

- ❗ Remove metallic staple needles, clips, etc. from the paper before punching.
- ❗ Align the paper with the paper guide before punching.
- ⊘ Do not punch anything but paper.
- ⊘ Do not punch paper exceeding the specified quantity.
- ⊘ Do not punch sticky paper.
- ❗ Dispose paper scrap frequently.
- ⊘ Do not try to modify, disassemble, or repair the device.

Parts names



Product specifications

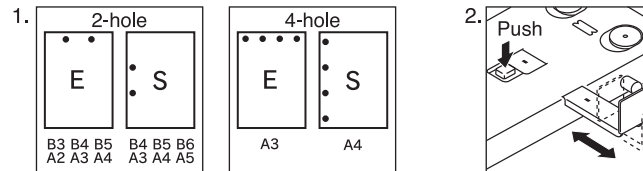
Punching capacity	275 sheets (27.5 mm) of 80 gsm paper
Hole diameter	6 mm
Hole pitch	80 mm
Depth	6 mm - 16 mm
Side gauge	A2E to B8S
Size	W 157 mm x L 375 mm x H 256 mm
Weight	6 kg

To use the punch

- Lift up the handle.
- Use the side gauge and the depth-gauge to set the paper punching position.
- Once paper are set, press the handle downward to punch. Ensure that the punching blade is completely through to the punching disk.
- Once punching is complete, the handle should be lifted to retract the paper.

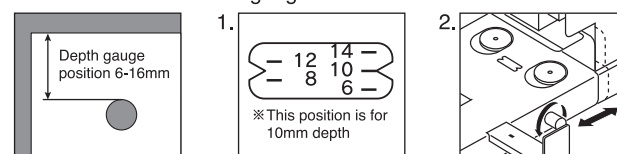
● To set the side-gauge position

- 2-hole centering on the short side of A2 paper to the long side of B6 paper and 4-hole centering on the short side of A3 paper and the long side of A4 paper can be set.
 - Adjustable gauge shows different sizes of paper to be punched. Push down the lock and move the gauge to desired position.
- ⊙ For A4 size paper, 4 hold punching is possible by simply setting the gauge at the two 888 position.



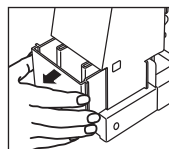
● To set the depth-gauge position

To set desired distance from the edge of paper to hole to be punched, simply loosen up the lock and move entire table back and forth. This distance is shown on the gauge.



● Paper waste

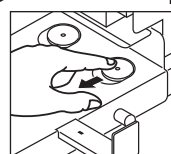
- Pull out the waste tray from the punch.



❗ The paper waste tray should be cleaned out from time to time.

If blades seem to be dull

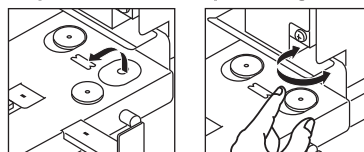
● Rotation of the position of punching disk



- If you feel punching becomes dull, rotate the punching disk in use from time to time.

⚠ Do not place your hands under blades. (It may result in injury.)

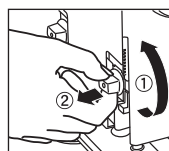
● Replacement of the punching disk



- Once circumference of the punching disk is all damaged, replace the punching disk.
- Make sure that depth-gauge reading is less than 12 in order to give disk room to move forward.

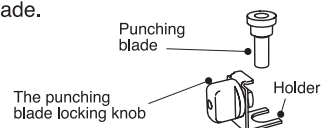
⚠ Do not place your hands under blades. (It may result in injury.)

● Replacement of the punching blades



- Turn the punching blade locking knob to the left to remove and replace the blade.
- If the punching blade punches poorly, please replace the punching blade.

⊘ Do not touch the point of the blade. (It may result in injury.)



Consumables

Punching blade	HD-430MD (1 pce)
Punching disk	P-B01 (10 pce)

※ You can buy consumables at a shop from which you purchased the puncher, or through CARL NETSHOP at www.carl-officeproducts.com.

CARL MFG. CO., LTD
TOKYO, JAPAN

CARL MFG. OF HONG KONG LIMITED

Room 1519-1520, Star House, 3 Salisbury Road,
Tsimshatsui, Kowloon, Hong Kong
Tel: (852) 2302 1488 Fax: (852) 2735 3880
Website: www.carl-officeproducts.com / www.carlacraft-hobby.com
Email: carl@carlmfg.com.hk