

CARL® HD-410N Instruction Sheet

Thank you for purchasing CARL New Heavy Duty Punch. Please read the instructions carefully before use, use the device correctly, and keep the instruction sheet for further reference.

This is a power puncher equipped with a punching blade and a punching disk.

Punching blade Consumable tubular blade for punching paper.

Punching disk Consumable disk blade rest.

⚠ Important warning



Do not double-punch over the holes or punch half at the edge of paper.

Such improper use may block up the puncher and give an excessive load to the tubular blade, causing damage and failure.

⚠ Warning

Failure to observe the following may cause injury.

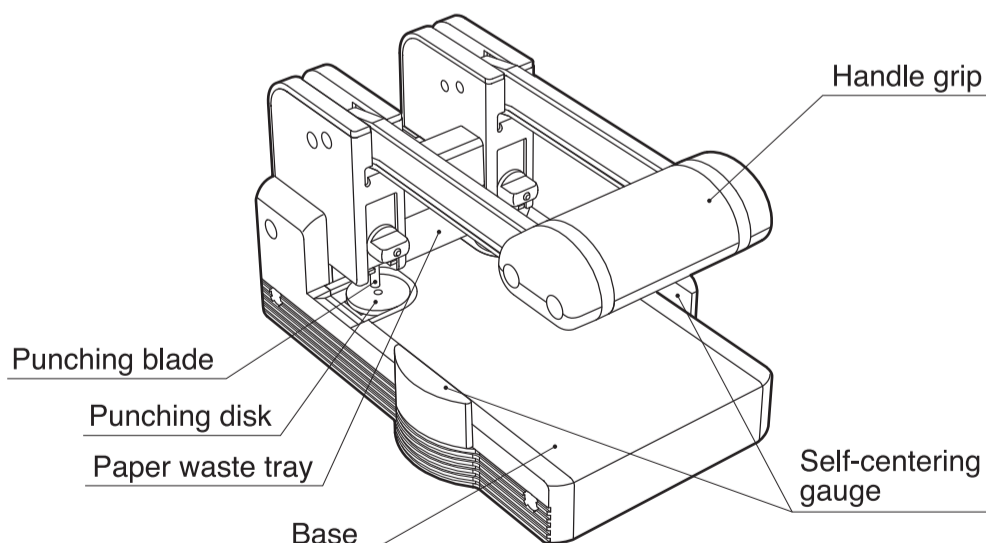
- ⊘ The punching surface is equipped with a blade. Do not touch the blade.
- ⊘ Never allow a child to use the puncher.
- ⊘ Do not place anything on the puncher or sit on it.
- ⊘ Do not use it on an unstable surface.
- ⚠ Hold the puncher securely with both hands when carrying it.

⚠ Caution

Failure to observe the following may cause damage to the device.

- ⚠ Remove metallic staple needles, clips, etc. from the paper before punching.
- ⚠ Align the paper with the paper guide before punching.
- ⊘ Do not punch anything but paper.
- ⊘ Do not punch paper exceeding the specified quantity.
- ⊘ Do not punch sticky paper.
- ⚠ Dispose paper scrap frequently.
- ⊘ Do not try to modify, disassemble, or repair the device.

Parts names



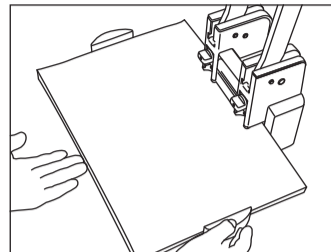
Product Specifications

Punching capacity	100 sheets (10 mm) of 80 gsm paper
Hole diameter	6 mm
Hole pitch	80 mm
Depth	9 mm
Self-centering gauge	A3E to B6S
Size	W 164 mm x L 241 mm x H 140 mm
Weight	2.8 kg

To use the Punch

1. Lift up the handle.
2. Use the self-centering gauge to set the paper punching position.
3. Once papers are set, press the handle downward to punch.
4. Once punching is complete, the handle should be lifted to retract the paper.

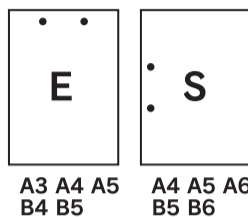
● To set the paper position



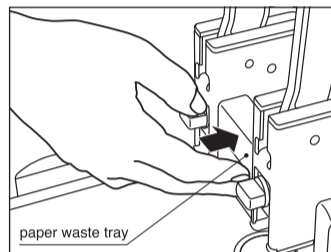
1. Place the paper on the base and align it to the center position by adjusting the self-centering gauge on both side.
2. The self-centering gauge is adjustable to accommodate from A3E to B6S paper size.

⚠ Press the paper firmly to the back wall.

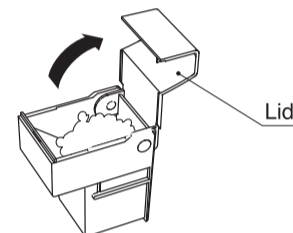
- The machine can indicate the center of papers with the sizes of A3E to B6S.



● Paper waste



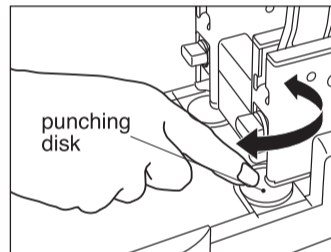
1. Push the waste tray from the punch and remove it from the rear.
2. Open the lid and dispose of the paper waste.



⚠ The paper waste tray should be cleaned out from time to time.

If blades seem to be dull

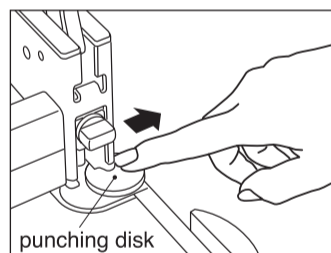
● Rotation of the position of punching disk



- If you feel punching becomes dull, rotate the punching disk in use from time to time.

⚠ Do not place your hands under blades. (It may result in injury.)

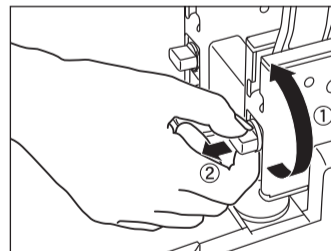
● Replacement of the punching disk



- Once circumference of the punching disk is all damaged, replace the punching disk.

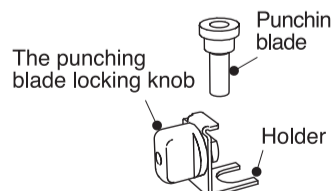
⚠ Do not place your hands under blades. (It may result in injury.)

● Replacement of the punching blade



- Turn the punching blade locking knob to the left to remove and replace the blade.
- If the punching blade punches poorly, please replace the punching blade.

⊘ Do not touch the point of the blade. (It may result in injury.)



※ You can buy consumables at a shop from which you purchased the puncher, or through CARL NETSHOP at www.carl-officeproducts.com.

Consumables

Punching blade	HD-410MD (1 pce)
Punching disk	P-B01 (10 pce)

CARL MFG. CO.,LTD
TOKYO, JAPAN

CARL MFG. OF HONG KONG LIMITED

Room 1519-1520, Star House, 3 Salisbury Road,

Tsimshatsui, Kowloon, Hong Kong

Tel: (852) 2302 1488 Fax: (852) 2735 3880

Website: www.carl-officeproducts.com / www.carlacraft-hobby.com

Email: carl@carlmfg.com.hk